



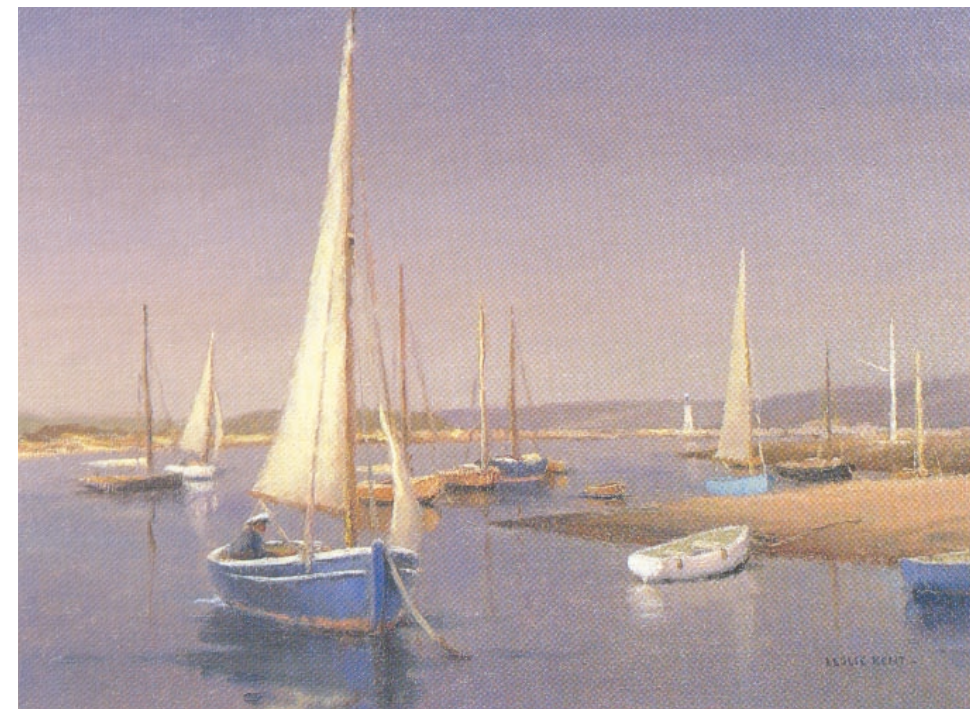
Dutch Barge c.1935 16" x 20" (version of 330 on page 201)
Reproduced by Medici as greetings card.



Regatta Morning 1944 20" x 24" (330)
This was painted during the annual regatta at Bembridge.



Titchfield Haven. This is very similar to 479, page 203.



The Little Haven 1948 25" x 30" (479)
Reproduced by Royle Publications under the title **Sailing Boats Moored off Keyhaven.**
The original is in the RSMA Diploma Collection.



Titchfield Haven, Hillhead 1955 25" x 30" (693)
Reproduced as print by Royle Publications.



Spring in Sussex 14" x 18"



Frome Bridge, Wareham 1929 14" x 18" (054)



In Weymouth Harbour 1948 14" x 18" (497)



In Bembridge Harbour 1939 14" x 18" (253).
Exhibited at the Royal Academy 1941.



Quiet Morning aka Morning Calm 1944 25" x 30" (316)
This illustration is from a large print of the painting by Medici.



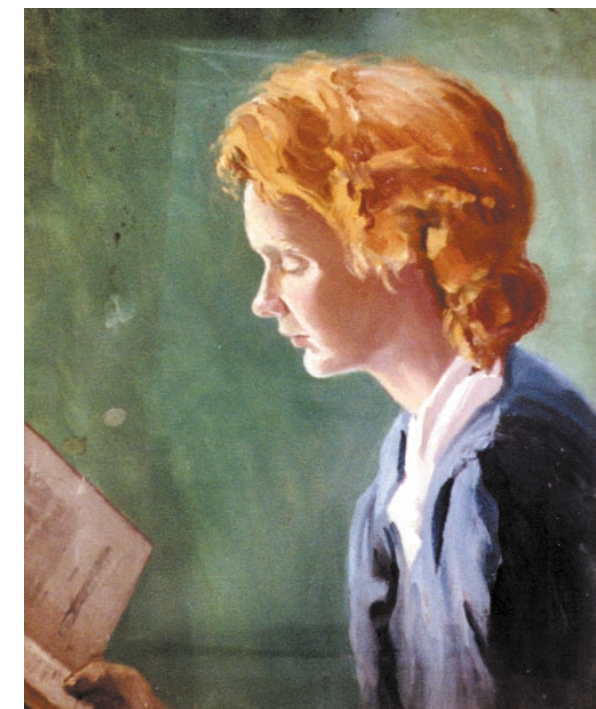
Long Valley, Aldershot 1921 9" x 12" (007)



Hayle Estuary 1938 20" x 24" (240)



Porchester Lake and Castle 1970 20" x 24" (1039)



Pam Windover 1943 16" x 20" (306)



Battrick's Bakery, Corfe Castle 1943 16" x 20" (297)



In St Ives Harbour (aka A Corner of St Ives Harbour) 1954 14" x 18" (673)



Hazy Day Studland Heath 1951 20" x 24" (580)



Lane at back of Tregenna (aka Cornish Farm Lane) 1938 14" x 18" (258)



Margaret Kent *c.1920s or 1930s*



Knitting Girl 1932 10" x 13" (119)
The sitter is evidently Margaret



Sailing Days (aka Before the Wind) 1971 14" x 18" (1054)



Sand Dunes, Bembridge Harbour 1949 14" x 18" (534).



Trecastle, Breconshire 1945 14" x 18" (360)



Loch Alsh 10" x 14"



Setting Sail at Walberswick 16" x 20"



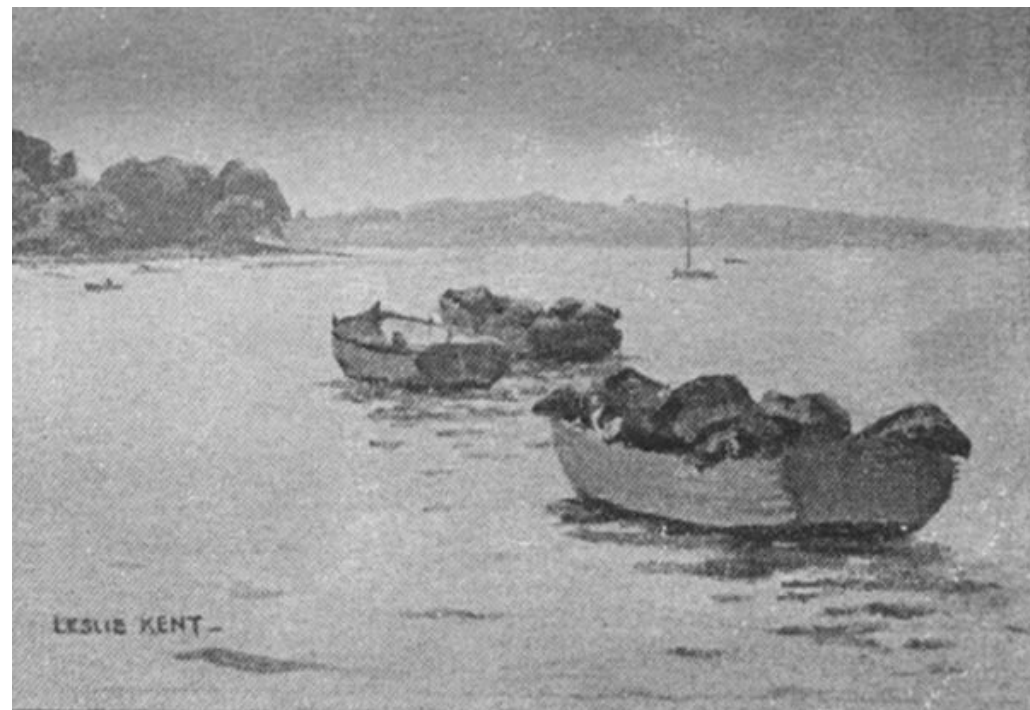
Not identified 12" x 15"



Southwold Sailing Club 14" x 18"



Not identified 18" x 24"



Lobster Boats, Bembridge 1944 9" x 12" (334)



Brownsea Island 16" x 20"



Porchester Castle 1977 16" x 20" (1081)



Summer House, Bonds Cay 12" x 16"



Near West Holme, Dorset 8" x 10" (sketch for 917)



Sailing Days 1953 14" x 18" (Probably 656)